

2810 160th Ave SE, Bellevue, WA

Building 1

111,297 RSF

1ST FLOOR	2ND FLOOR	3RD FLOOR
35,382 RSF	37,950 RSF	37,965 RSF

HVAC SERVICE: Siemens APOGEE direct digital control (DDC) system

ELECTRICAL LOADS/CAPACITY: 277/480-volt, 3-phase, 4-wire electrical service to a 2,000-amp main switchboard

CEILING HEIGHT (DROPPED): 9 feet

SLAB TO SLAB HEIGHT: 15 feet

FLOOR LOADING: 50-55 psf plus 20 psf partition load

CONSTRUCTION TYPE: Aluminum curtain wall system

GENERATOR: Eight 1,200-kW Waukesha & four 1,500-kW Caterpillar diesel generators in Building 2 provide emergency power to Buildings I, II, III and IV

ELEVATORS: 2

LOADING DOCKS: 1

REDUNDANT POWER FEEDS: Three (3) different current Puget Sound Energy power feeds into the Property (with 2 currently being utilized)

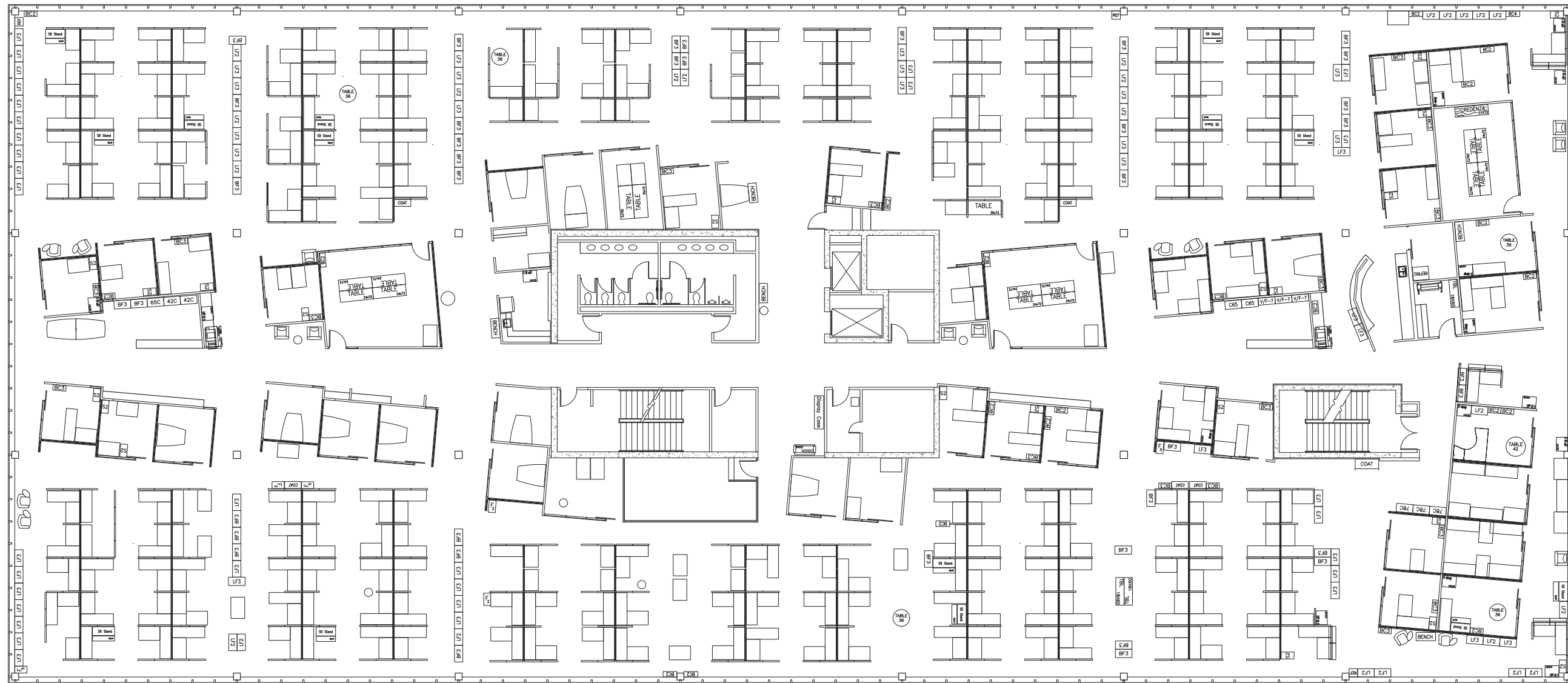
Suite 100 | 35,382 RSF

NEWER CONDITION SPACE/CAN BE OCCUPIED "AS IS."



Suite 200 | 37,950 RSF

NEWER CONDITION SPACE/CAN BE OCCUPIED "AS IS."



Suite 300 | 37,965 RSF

NEWER CONDITION SPACE/CAN BE OCCUPIED "AS IS."

