



2800 160th Ave SE, Bellevue, WA

## Building 2

**213,800 RSF**

1ST FLOOR	2ND FLOOR
110,564 RSF	103,236 RSF

**HVAC SERVICE:** Siemens APOGEE direct digital control (DDC) system

**ELECTRICAL LOADS/CAPACITY:** Multiple substations reduce the incoming 12.47-KV to a usable 277/480-volt, 3-phase, 4-wire, service; each substation connects to a 4,000-amp main switchboard

**SLAB TO SLAB HEIGHT:** 17 feet

**FLOOR LOADING:** 100 psf+

**CONSTRUCTION TYPE:** Aluminum curtain wall system on west and south elevations; partial height concrete base walls and metal building walls above w/ pre-finished vertical metal panels on north and east elevations

**GENERATOR:** Eight 1,200-kW Waukesha & four 1,500 kW Caterpillar diesel generators in Building 2 provide emergency power to buildings I,II,III and IV; also provided w/ multiple uninterruptible power supplies

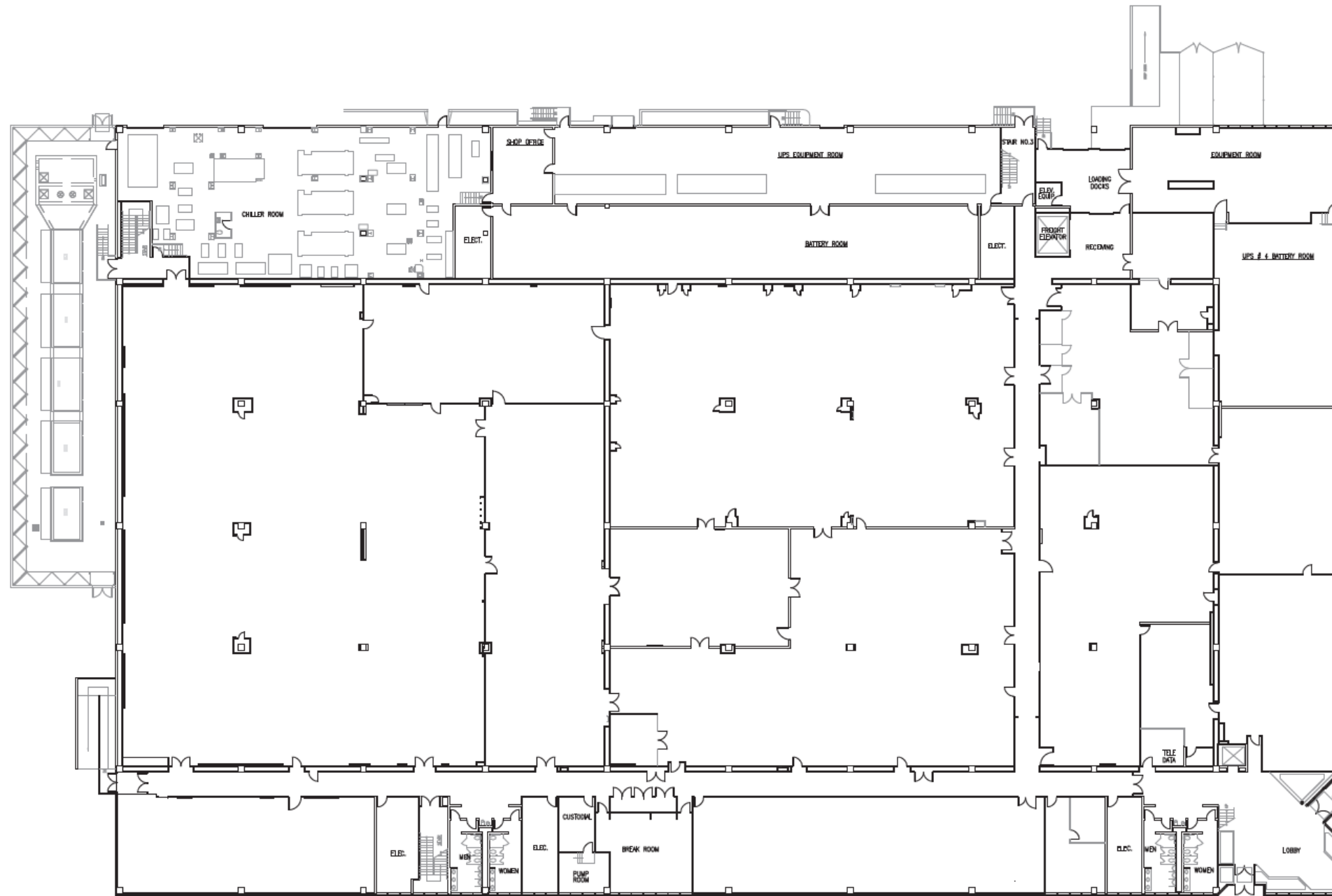
**ELEVATORS:** 2

**LOADING DOCKS:** 3

**REDUNDANT POWER FEEDS:** Three (3) different current Puget Sound Energy power feeds into the Property (with 2 currently being utilized)

# Suite 100 | 110,564 RSF

SPACE TO BE SUBSTANTIALLY REMODELED/CUSTOM BUILD.



# Suite 200 | 103,236 RSF

SPACE TO BE SUBSTANTIALLY REMODELED/CUSTOM BUILD.

