



Building 3 (Future Amenity Center)

40,200 RSF

1ST FLOOR	2ND FLOOR
32,500 RSF	7,700 RSF

HVAC SERVICE: Siemens APOGEE direct digital control (DDC) system

ELECTRICAL LOADS/CAPACITY: 277/480-volt, 3-phase, 4-wire electrical service from pad-mounted transformer; transformer connects to 600-amp service disconnect then distributed to 277/480-volt panels and 120/208-volt panels through step-down transformers

SLAB TO SLAB HEIGHT: 24 feet at warehouse

FLOOR LOADING: TBD - 250 psf on ground floor

CONSTRUCTION TYPE: Painted concrete tilt-up panels

GENERATOR: Eight 1,200-kW Waukesha & four 1,500 kW Caterpillar diesel generators in Building 2 provide emergency power to buildings I,II,III and IV

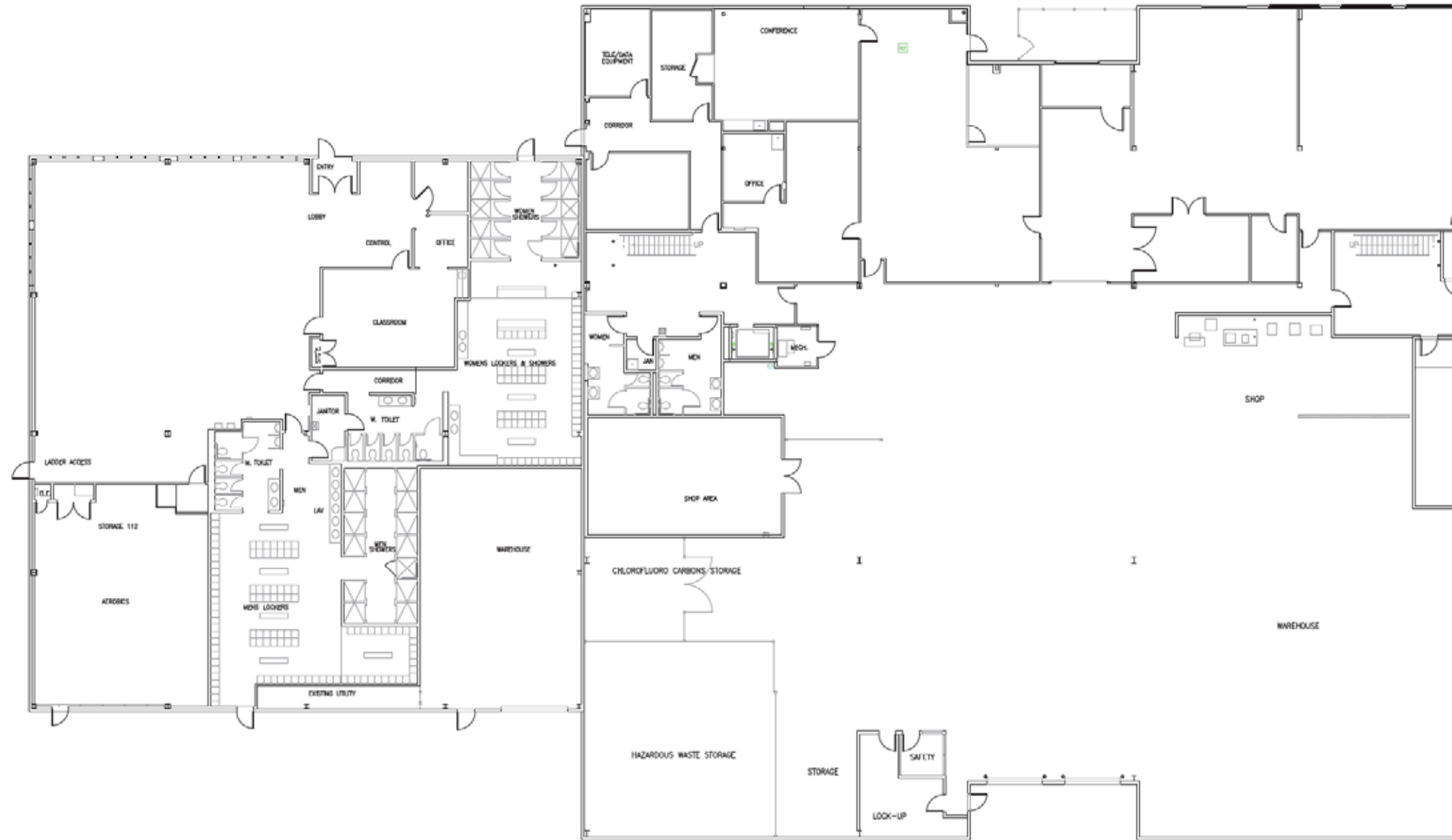
ELEVATORS: 1

LOADING DOCKS: 3

REDUNDANT POWER FEEDS: Three (3) different current Puget Sound Energy power feeds into the Property (with 2 currently being utilized)

2750 160th Ave SE, Bellevue, WA

Suite 100 | 32,500 RSF



Suite 200 | 7,700 RSF

