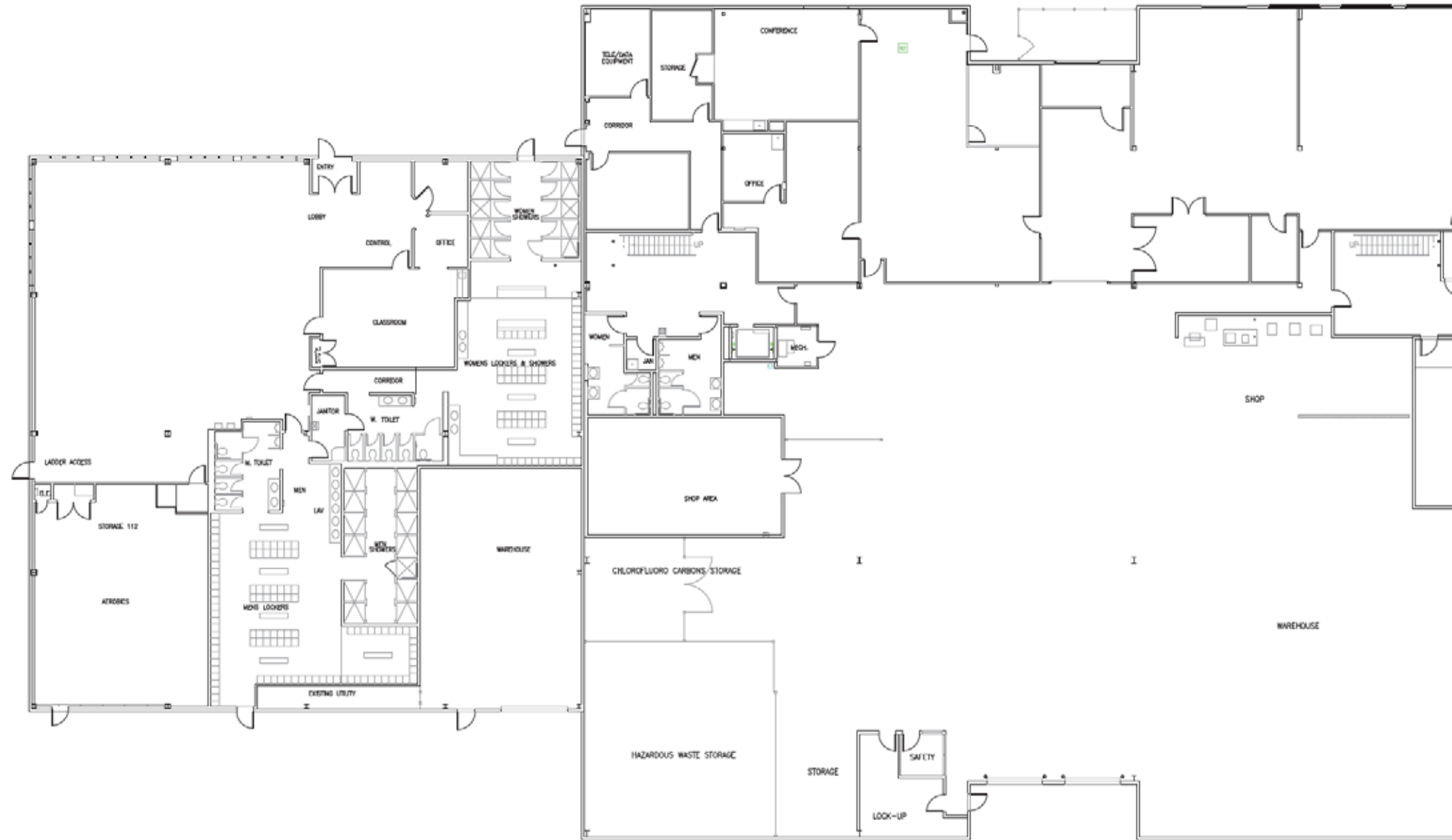
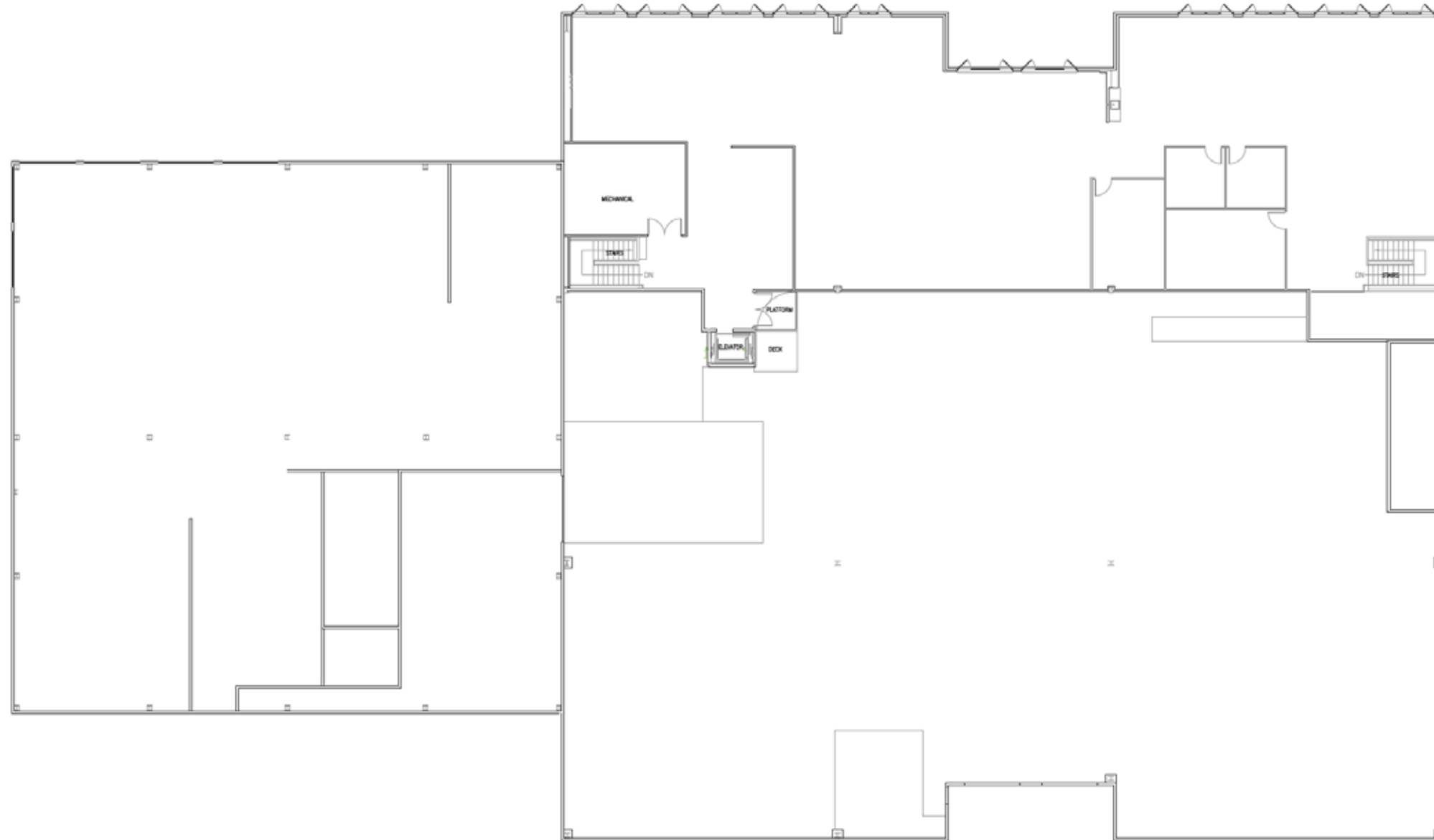


Suite 100 | 32,500 RSF



Suite 200 | 7,700 RSF





2760 160th Ave SE, Bellevue, WA

Building 4

114,207 RSF

1ST FLOOR	2ND FLOOR	3RD FLOOR	4TH FLOOR
27,871 RSF	28,779 RSF	28,779 RSF	28,779 RSF

HVAC SERVICE: Siemens APOGEE direct digital control (DDC) system

ELECTRICAL LOADS/CAPACITY: Supplied a 12.47-KV feed from Building 33-95 to a substation located in rooftop electrical room

CEILING HEIGHT (DROPPED): 9 feet

SLAB TO SLAB HEIGHT: 15 feet

FLOOR LOADING: 80 psf plus 20 psf partition load

CONSTRUCTION TYPE: Aluminum curtain wall system

GENERATOR: 400-kW Onan diesel generator in Building 5 provides emergency power to buildings V, VII, and VIII

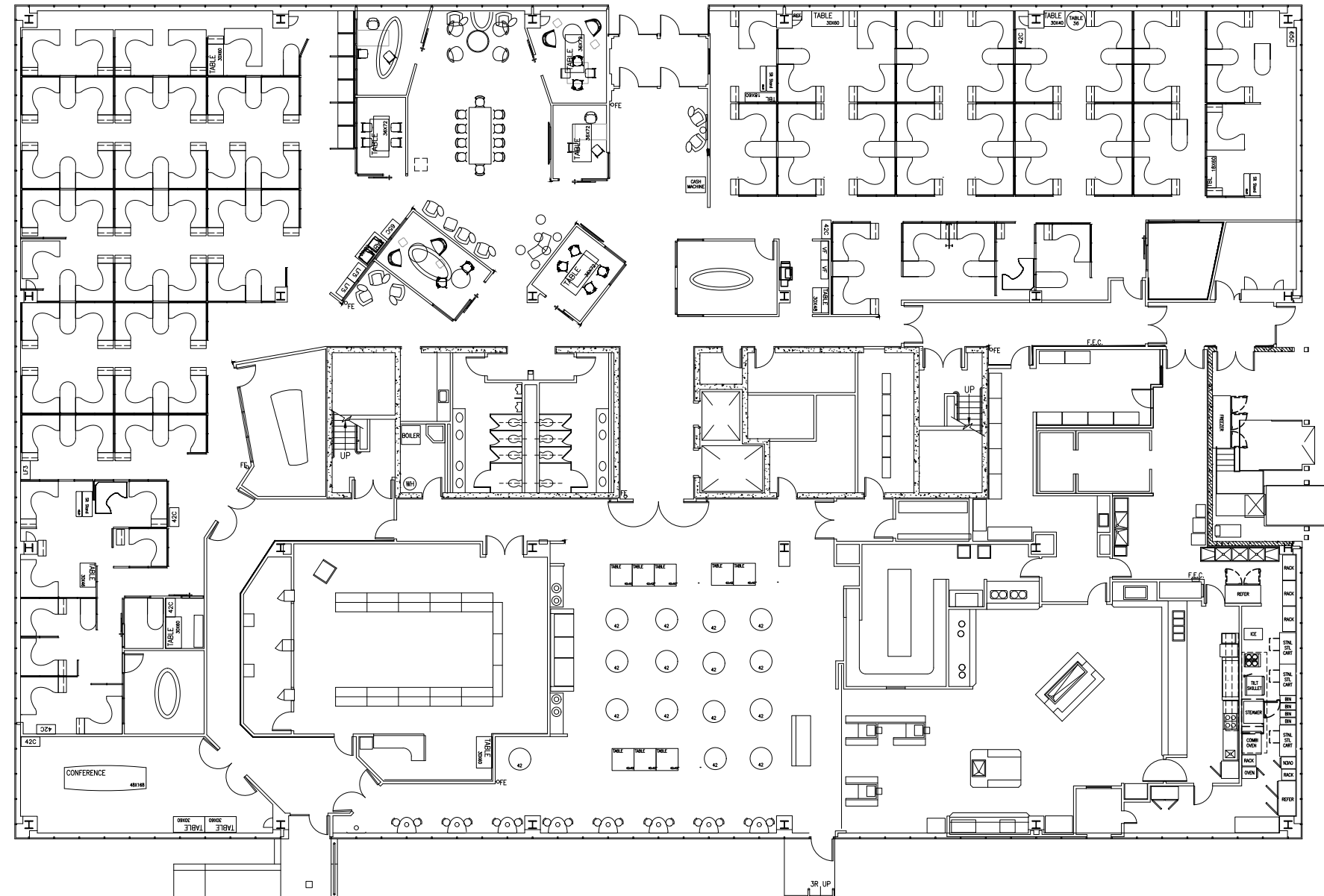
ELEVATORS: 2

LOADING DOCKS: 1

REDUNDANT POWER FEEDS: Three (3) different current Puget Sound Energy power feeds into the Property (with 2 currently being utilized)

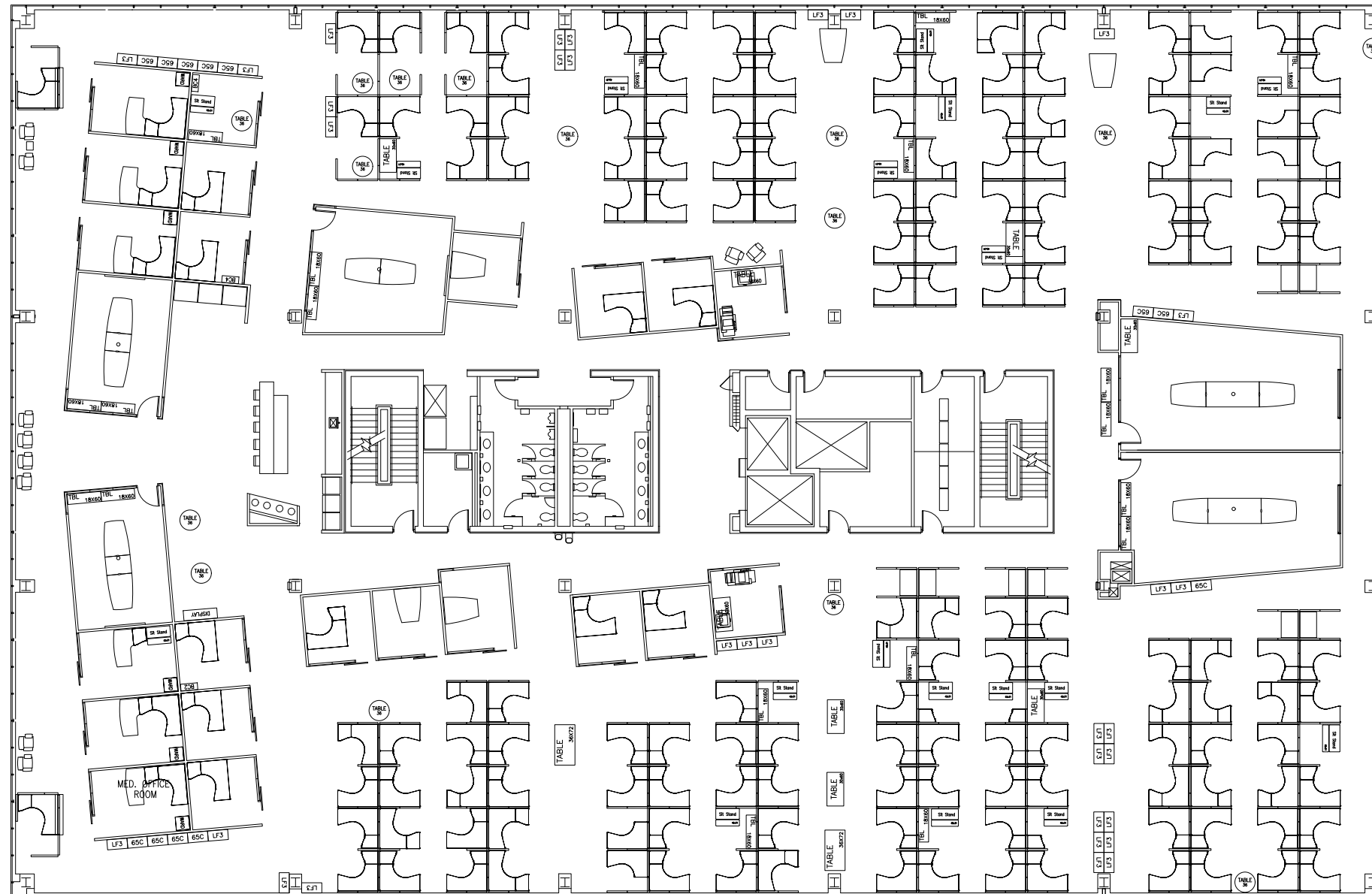
Suite 100 | 27,871 RSF

NEWER CONDITION SPACE/CAN BE OCCUPIED "AS IS."



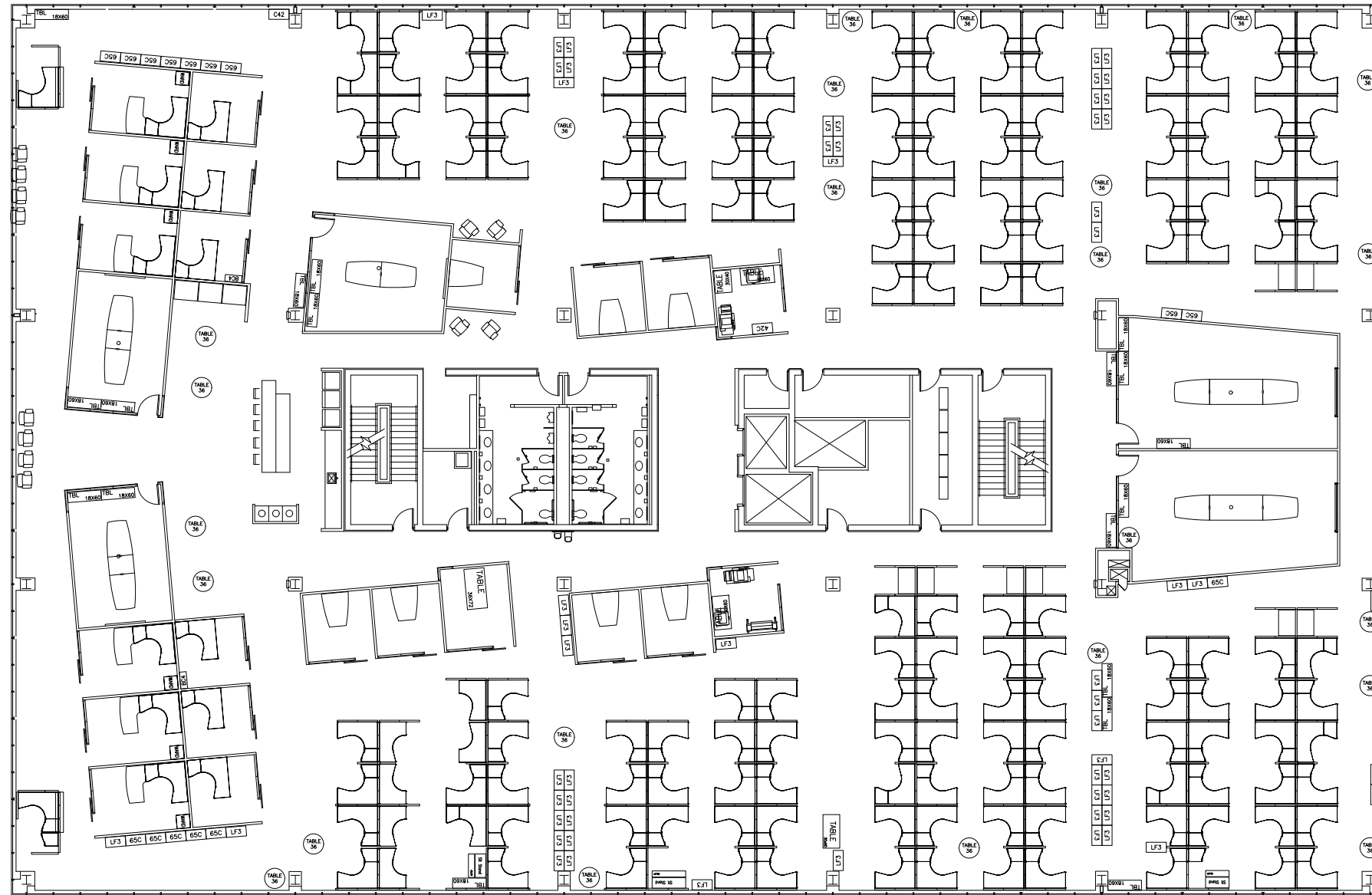
Suite 200 | 28,779 RSF

NEWER CONDITION SPACE/CAN BE OCCUPIED "AS IS."



Suite 300 | 28,779 RSF

NEWER CONDITION SPACE/CAN BE OCCUPIED "AS IS."



Suite 400 | 28,779 RSF

NEWER CONDITION SPACE/CAN BE OCCUPIED "AS IS."

